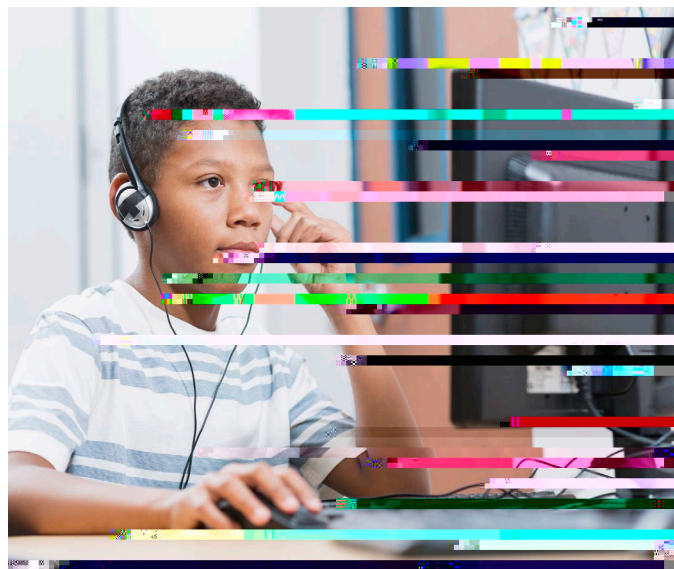




ACCESS for ELLs is an English language proficiency test that measures students' academic English language skills.



ELL

ELL stands for English Language Learner. It refers to students who are learning English as a second language. These students may have different backgrounds and levels of proficiency in English. Schools often provide additional support and resources for ELL students to help them succeed in their academic and social lives.

Language Domain

The Language Domain focuses on the student's ability to understand and use English in various contexts. This includes listening, speaking, reading, and writing. Assessments in this domain measure the student's proficiency in these skills and their ability to communicate effectively in English.

